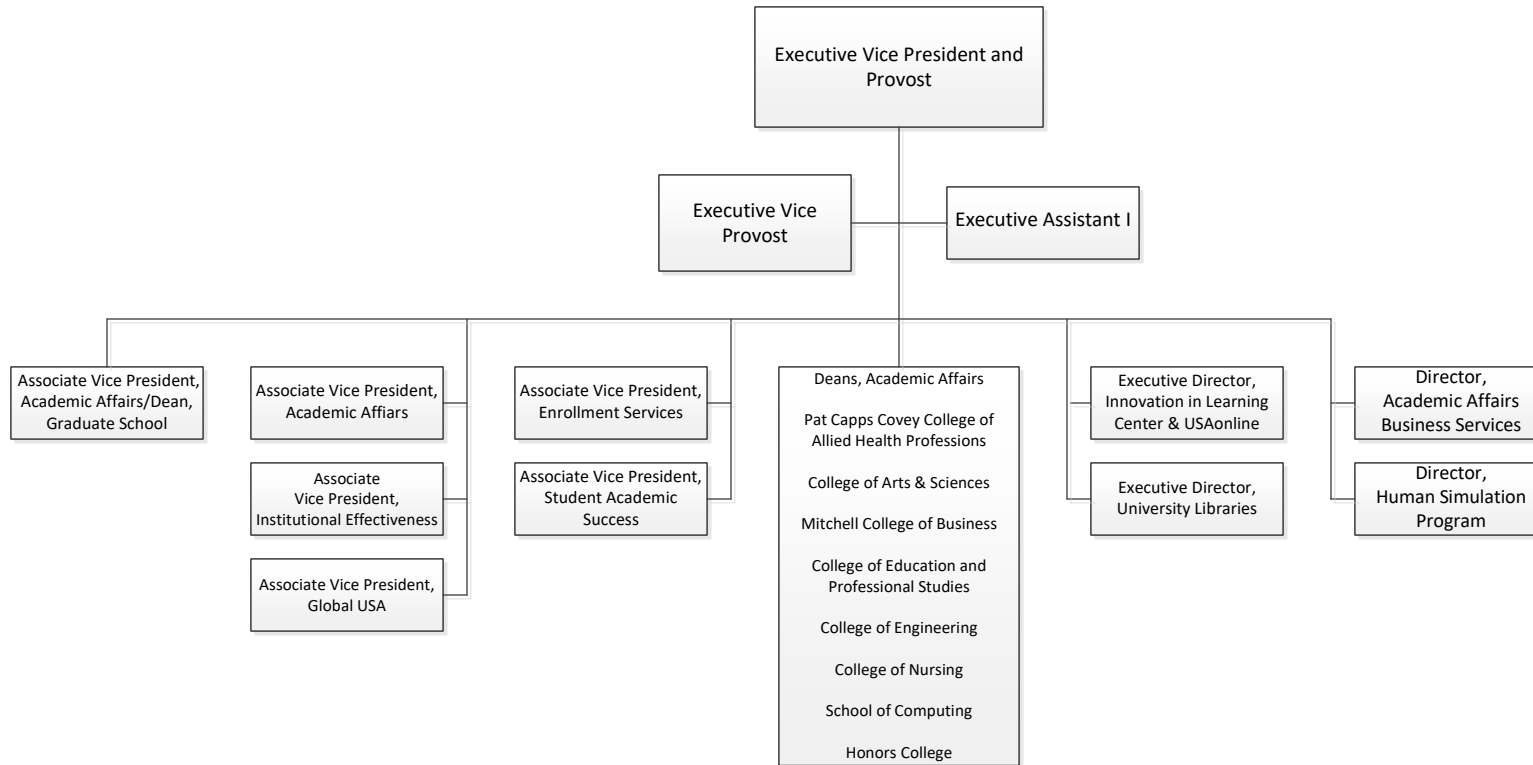


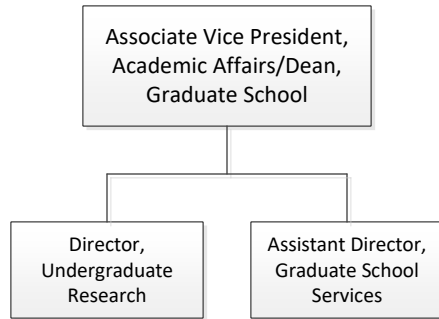
# University of South Alabama Academic Affairs

---

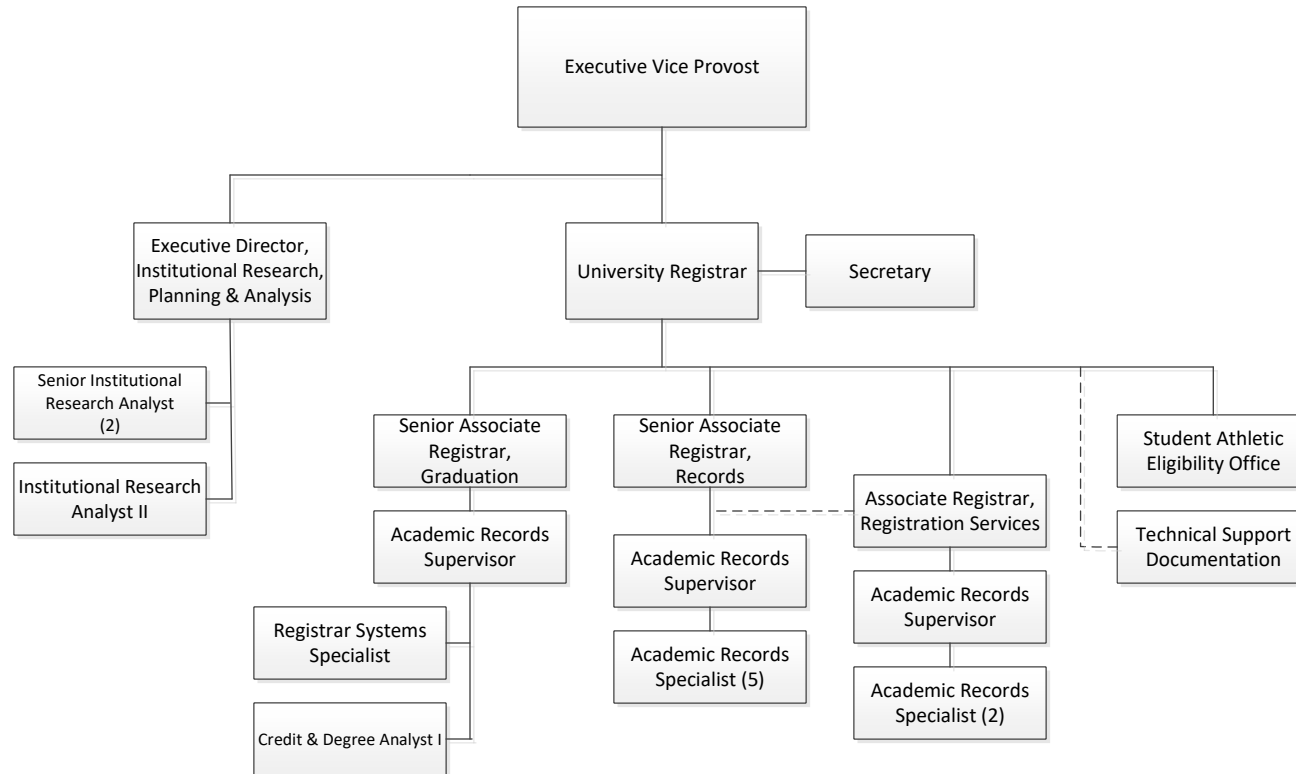


**Academic Affairs  
Graduate School**

---



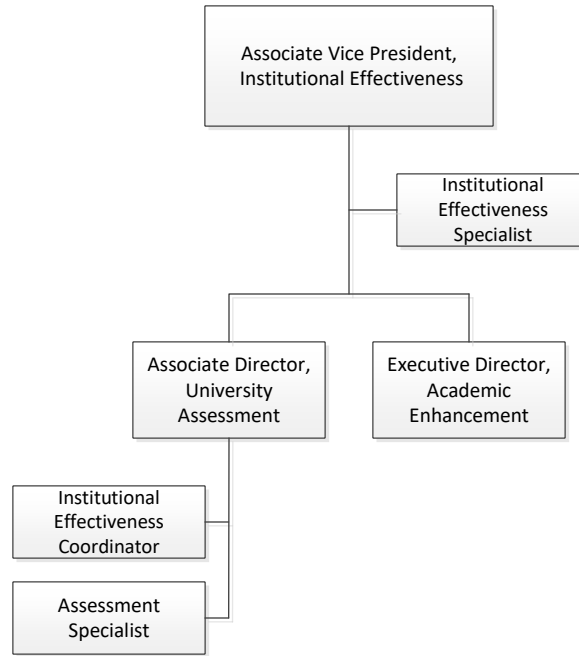
# Academic Affairs Executive Vice Provost



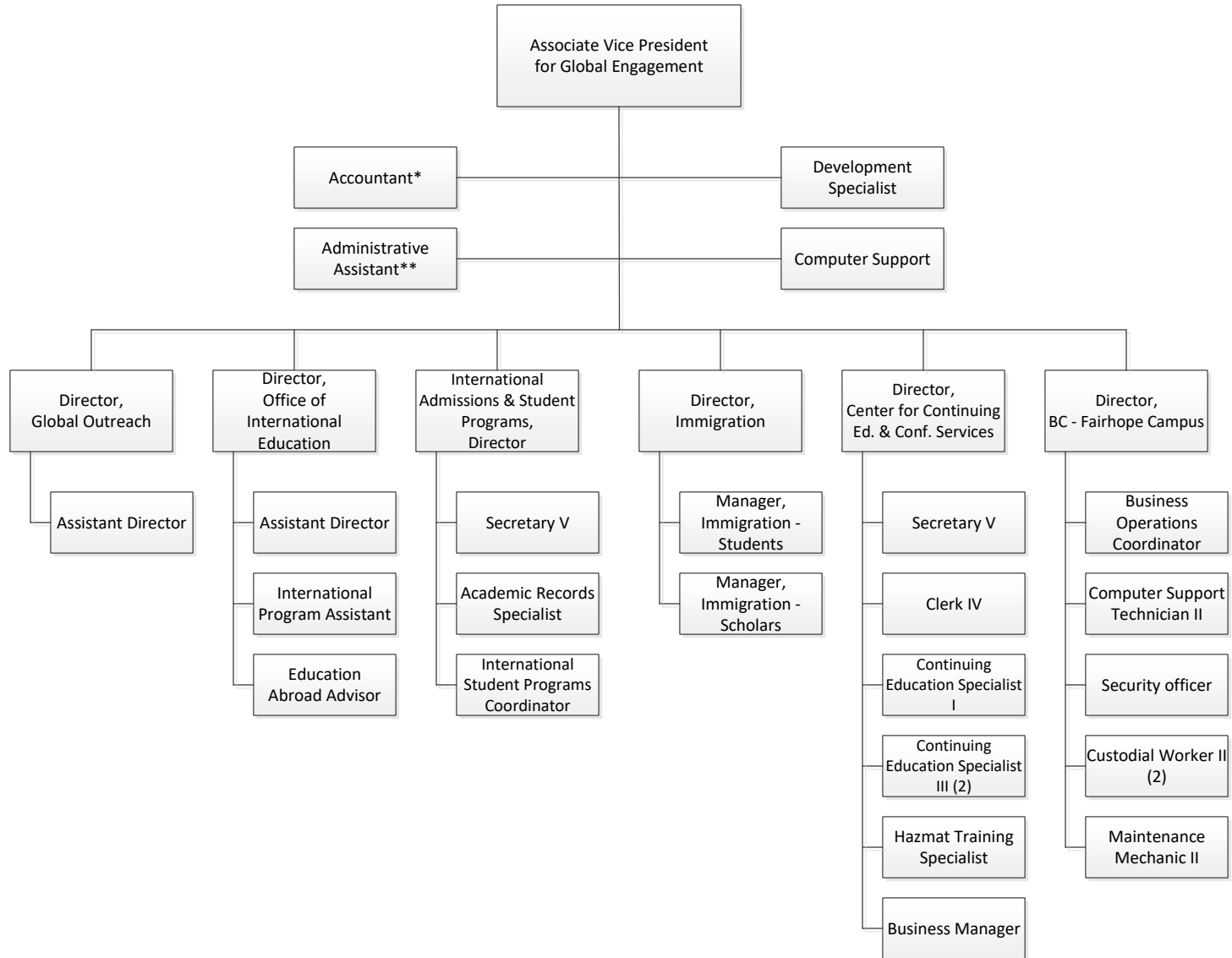
# Academic Affairs

## Institutional Effectiveness

---



# Academic Affairs Global USA

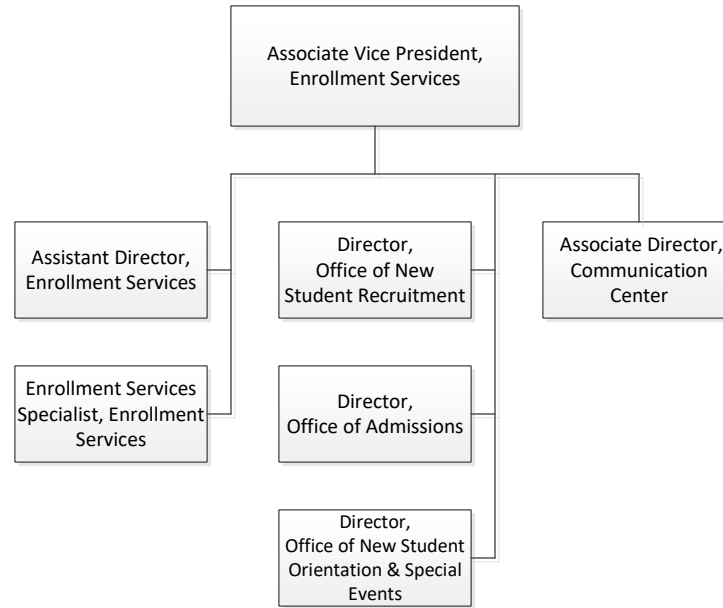


\*also reports to Director, Center for Continuing Ed. & Conf. Services

\*\*also reports to Director, Global Outreach

# Academic Affairs Enrollment Services

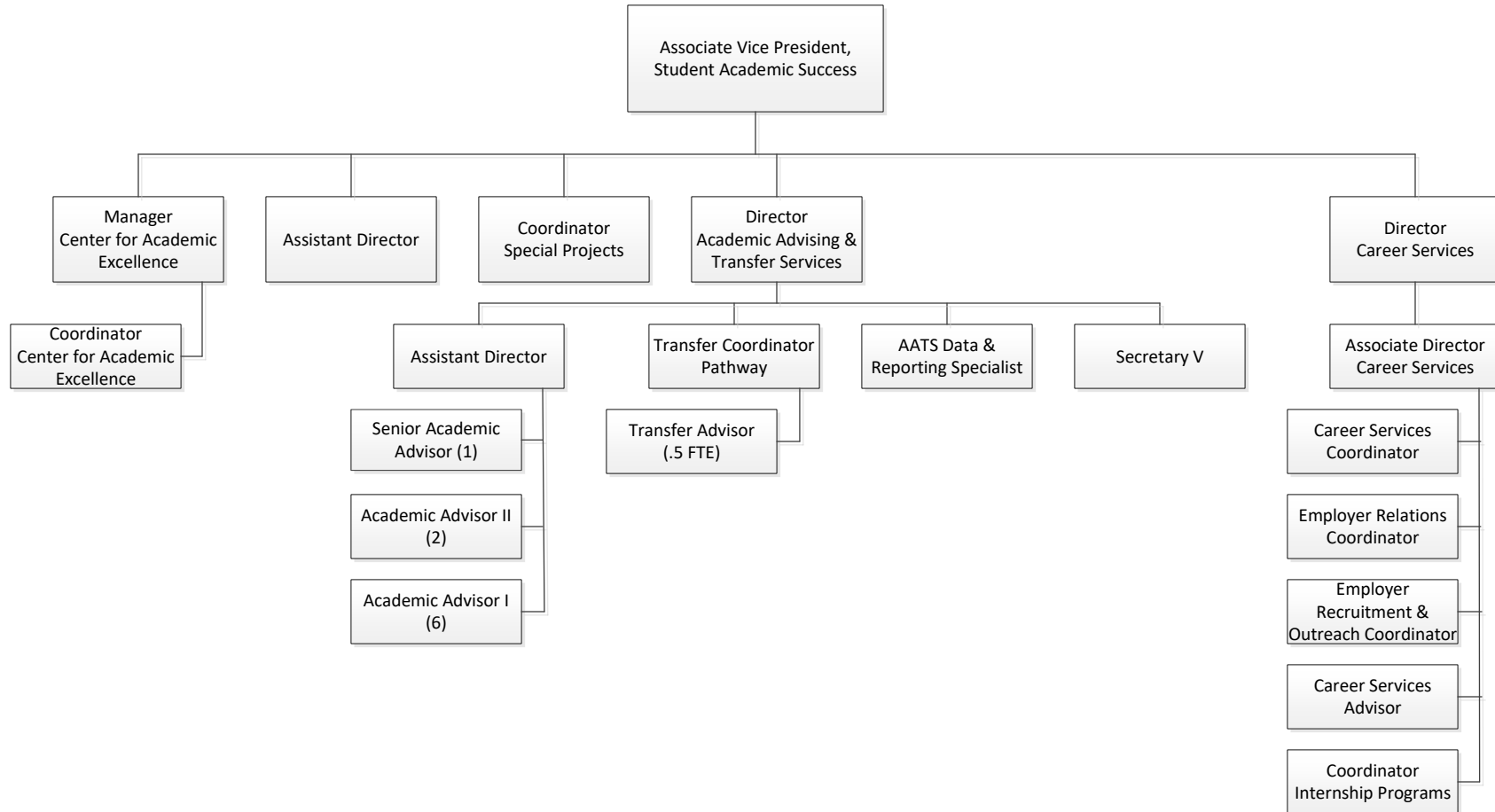
---



# Academic Affairs

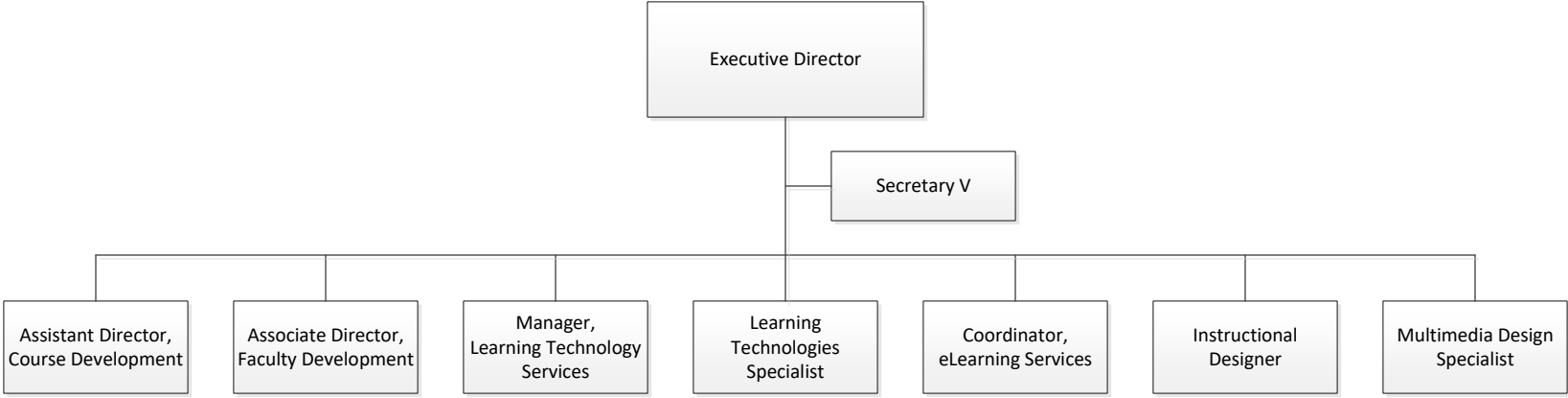
## Student Academic Success

---



**Academic Affairs  
Innovation in Learning Center & USAonline**

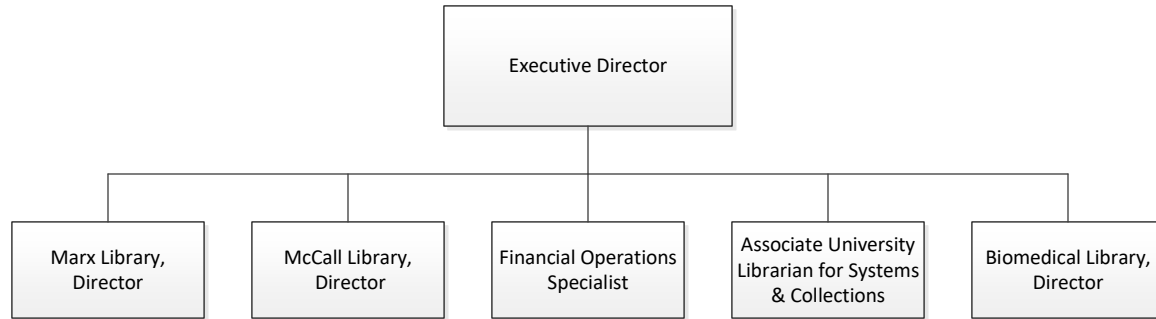
---





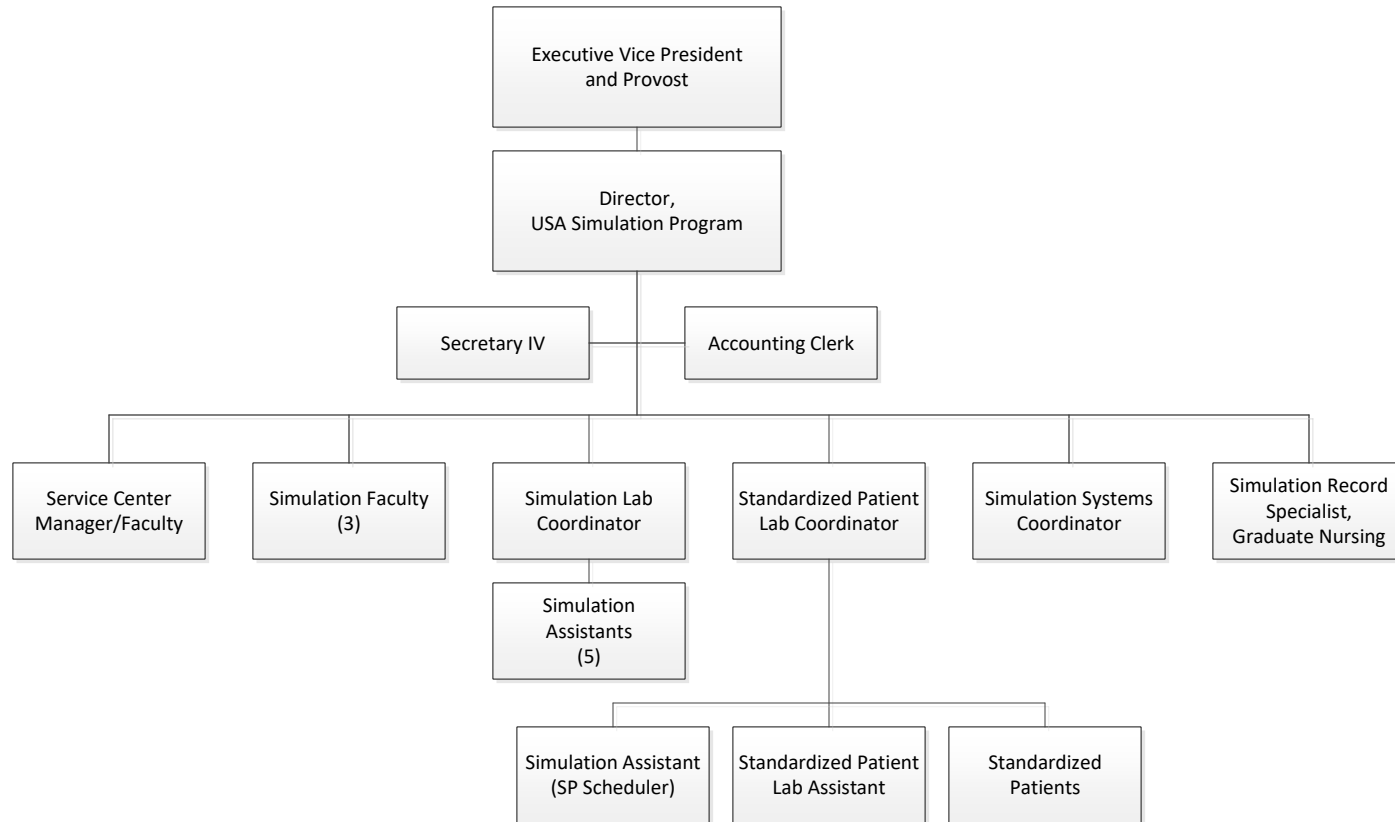
**Academic Affairs  
University Libraries**

---



# Academic Affairs USA Simulation Program

---



\*Standardized Patients (SP) are contract workers. Numbers fluctuate based on program needs.